

Product Description



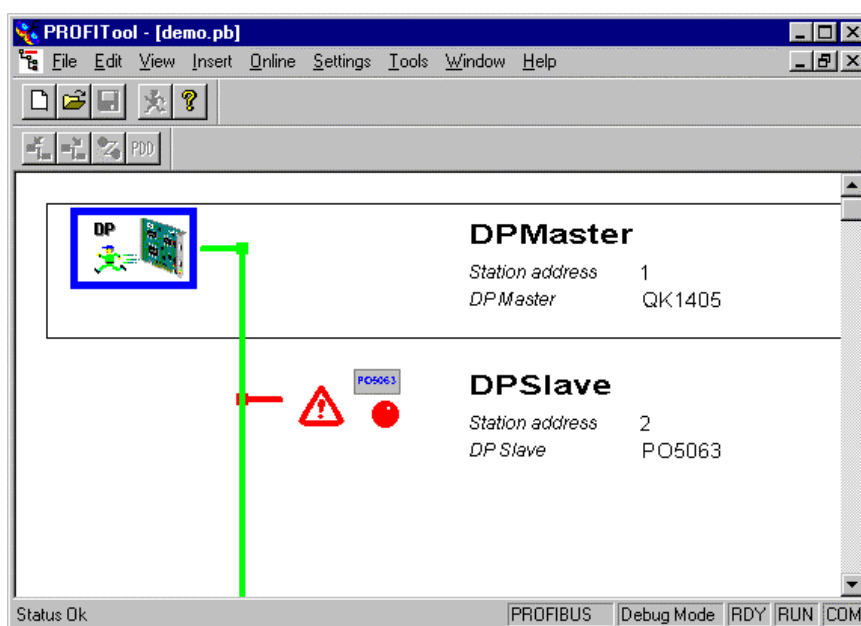
The PROFITool software is executable in the WINDOWS[®] environment, was designed to be used as a fieldbus systems configuration tool.

PROFITool offers a powerful interface to configure, diagnostics and documentation tools, through the use of WINDOWS[®] environment resources,

Using resources provided by WINDOWS[®] environment, PROFITool offers a powerful interface associated with configuration resources, diagnostics and documentation.

The PROFITool allows the configuration and diagnostics of the QK1405 and AL-3406 masters modules, which control a communication network using the PROFIBUS DP protocol.

The PROFITool software is an universal configurator to fieldbus systems. Allows the configuration of the most important fieldbus systems like PROFIBUS, InterBus-S, CAN, etc. The handling is the same for all protocols. Currently, the ALTUS systems, uses the PROFIBUS DP protocol.



The main features of the PROFITool configurator are described as follows:

- **Consistency:** The PROFITool is a complete tool for visual configuration of fieldbus. All the devices can be configured in the same environment. The PROFITool evaluates all relations between the device components among the network, allowing only consistent relationships.
- **Documentation:** The PROFITool documents the fieldbus system. After configuration, you can print out a detailed documentation of your fieldbus network. You can print documentation with details about the bus topology and the detailed attachment characteristics for each device
- **Configuration Files:** The PROFITool uses standardized GSD configuration files. Some protocols support standardized files containing information about all features and limitations of the device slave. (E.g. GSD files of the PROFIBUS DP standard). ALTUS GSDs files are included in PROFITool, ALTUS internet site (www.altus.com.br) can be checked for newer versions of this files.
- **Diagnostics:** The PROFITool is also a diagnostic tool. After configuring, the program can be changed to diagnostic mode. In this mode one can have the complete status of the Master and devices on the net
- **Expansion:** The PROFITool can be expanded. The software consists of a standard executable file (.EXE) and several specific libraries (DLL), being able to be expanded by adding libraries of other communication protocols

Ordering Data

Packing List

The product packing contains the following parts:

- AL-3865: PROFITool Software and MAN/AL-3865-UT - Utilization Manual (provided in CD)
- Software Licence Code
- AL-1327: Cable RJ45-CFDB9

Product

The following parts integrate the product:

Code	Description
AL-3865	PROFITool Programming Software

Related Items

The following parts do not integrate the product and can be order in separate:

Code	Description
QK-1405	Master PROFIBUS DP Interface
AL-3406	Master PROFIBUS DP Interface
QK-1404	Slave PROFIBUS DP Interface
PO5063	PROFIBUS-DP Slave Module

Note

PO5063 : This product needs additional modules to be used. Please consult Ponto Series Manual to more information.

AL-3406 : This product needs a rack to be used. Please consult AL-3406 Manual to more information.

Handbooks

To get more technical details, installation and utilization of the PROFITool software consult the manuals follow:

Código do Documento	Descrição
MU203026	PROFITool User's Manual - AL-3865
MU299026	PROFIBUS Network User's Manual
MU209010	PROFIBUS UTR Configuration Manual
MU209503	PO5063 User's Manual
CT109000	Ponto Series
MAN/MT4100	MasterTool Programming User's Manual