

1. Product Description

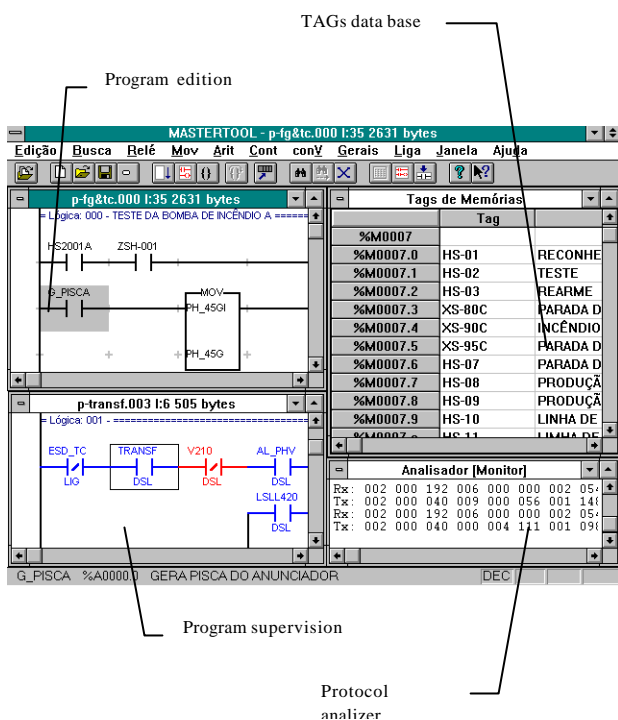
MasterTool programmer software runs at WINDOWS™ 3.1 operating system and is intended for programming and configuring ALTUS equipment, including programmable controllers, gateways and bridges.

MasterTool uses all WINDOWS™ resources to offer a powerful man machine interface besides multiples resources for data operating.

MasterTool was projected to run in PLCs networking architectures, supporting simultaneously real time communications of multiple PLCs operands.

2. General Characteristics

- MasterTool programmer supports all ALTUS PLCs series, from the smaller (PICCOLO) to the biggest (AL-2002). When in edition mode, TAGs or nicknames can be used besides the direct address. Through this feature, the project can be documented during the program edition.
- Program edition can be done quickly and easily just moving the mouse and pressing hot keys. To increase the velocity there are many toolbars available.
- The project concept is introduced by MasterTool, where many files can be joined performing a work room.
- MasterTool-PLC communication interface has embedded ALTUS ALNET I protocol version 2.00.



- MasterTool can be installed in a local network server to be executed in many remotes stations simultaneously. Each station must have a hardkey.
- MasterTool can communicate with all PLCs in a PLC network, writing and reading operands of each one in real time
- Use of TAGs or Nicknames
- Different rungs from application program can be showed simultaneously
- Program documentation executed during program documentation
- Serial interface check through protocol analyzer showing all data which flow by it
- Full compatibility with ALTUS AL-3830 software programmer by using import and export functions

- Use of windows to run different tasks simultaneously like program edition, operands reports, protocol analyzer and viewing of another program module

3. Software Characteristics

- MasterTool can work as a DDE server, allowing its data be accessed by DDE (DINAMIC DATA EXCHANGE) client applications. This feature become available operand to be reading from different PLCs by a spreadsheet like EXCEL™ or a data bank like ACCESS
- On line cross reference file updating during program edition, making immediate access to the points where an operand is used possible
- Reading or writing from/to a PLCs all project modules by only one command
- Context sensitive integrated help, working through hypertext concepts, bringing all MasterTool uses information, PLCs language and references to ALTUS support departments in Brazil, Europe and USA
- Program monitoring using colors, making the viewing of digital operands status easy
- Reports customize possibility, by adding or excluding information just clicking the mouse on desired option
- Versions comparative table:

	1.11	1.20	1.50 September/96
Supports AL-600 QUARK, AL-2000 and AL-3000 series	✓	✓	✓
Supports PICCOLO series		✓	✓
TAGs or addresses viewing		✓	✓
Instructions Toolbar			✓
Reports Toolbar			✓
Work room restore			✓
Automatic file backup		✓	✓
10 levels undo during edition			✓
Operands auto suggestion			✓
Cut & paste driven to instruction			✓

4. Manuals

For more information about any subject concerned to MasterTool programmer, the following manuals are recommended:

- User's Manual (code: 6203-012.4)
- Programming Manual (code: 6303-000.4)

5. Revisions

The document revision is showed at superior margin, listing subject changes or new formats.

The following historical shows observations related to each revision:

Revision: A	Date: 05/18/95
Approved by: Luiz Gerbase	
Author: Rosana Casais - AR&D	

Observations:

- First revision

Revision: B	Date: 10/03/95
Approved by: Júlio Sieczkowski	
Author: Parceria Ltda.	

Observations:

- Document has changed to WORD 6.0 format

Revision: C	Date: 06/11/96
Approved by: José Adil Albrecht	
Author: Luís Fernando A. Saraiva	

Observations:

- New features included
- Text reviewing
- Versions comparison table included