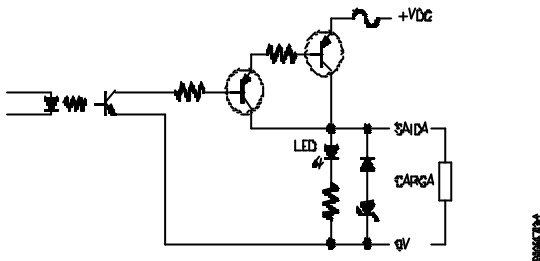


## 1. Description

The AL-1226 is a 16 isolated digital outputs card. It handles 24VDC with 2A per output.



## 2. Specifications

### 2.1. General

- Output type: source
- I/O capacity: 16
- Connection: common GND
- LEDs status indication per point
- Optic isolation per Output
- LED card accessing
- Over current protection: 8 A fuse
- Fast turn off for inductive load protection
- MTBF 86.000 hours @ 40°C  
based on MIL-HDBK-217E
- Mechanical protection: finger access and no protection for water  
based on IEC Pub. 144 (1963)
- Operation temperature: 0 a 60°C  
exceed IEC 1131
- Storing temperature: -25 a 75°C  
based on IEC 1131
- Operation humidity: 5 a 95% without condensation  
based on IEC 1131 level RH2
- Weight:  
net: 430g  
packed: 470g

### 2.2 Electrical

- Nominal tension:  
24 VDC (-50%, +30%)  
50 Vpick repetitive maximum
- Maximum current for continuous operation per output:  
2,0 A
- Temporary overload: surge current per output:  
2,6 A (1 s nominal tension)
- Maximum current per card:  
8 A
- Isolation I/O and system:  
2500 VDC
- Shut down protection for failure on CPU
- Card consumption:  
20 W with full load
- Electrostatic Surge Discharge:  
based on IEC 1131, level 3
- Electrical noise immunity (oscillating wave):  
based on IEC 1131, level A, and IEEE C37.90.1 (SWC)
- Irradiated electrical field immunity:  
10 V/m @ 140 MHz  
based on IEC 1131

## 3. Physical Dimensions

